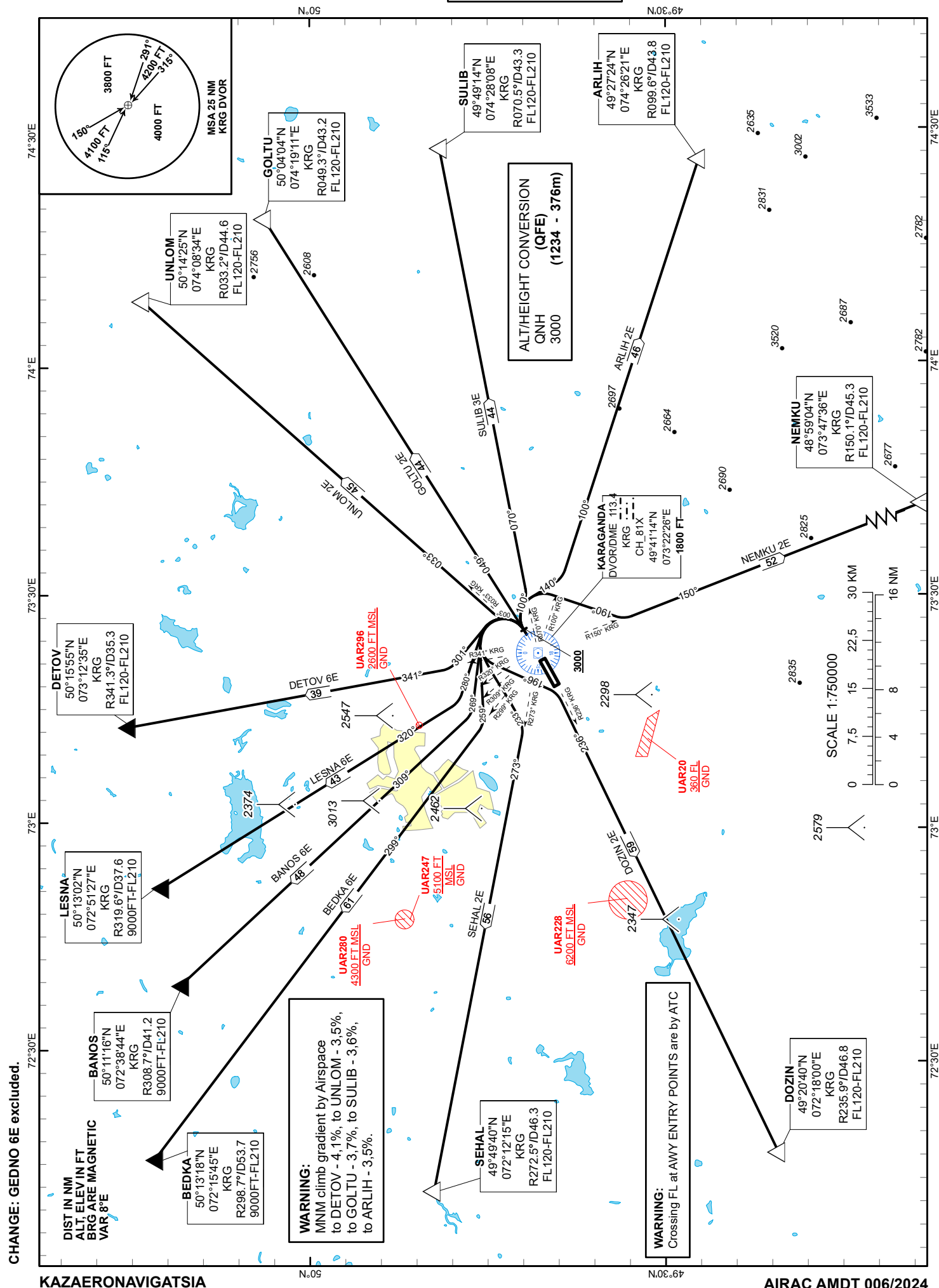


KARAGANDA  
RWY 05



<b>STANDARD DEPARTURE ROUTES – INSTRUMENT (SID) KARAGANDA RWY 05</b>
<b>UNLOM 2E</b> After take-off climb straight ahead to 3000 or above, then turn LEFT on track 003° until intercept R033°KRG, then proceed on track 033° to UNLOM (R033.2° D44.6NM KRG). Cross UNLOM at FL120-FL210.
<b>GOLTU 2E</b> After take-off climb straight ahead to 3000 or above, then turn LEFT on track 049°, then proceed to GOLTU (R049.3° D43.2NM KRG). Cross GOLTU at FL120-FL210.
<b>SULIB 3E</b> After take-off climb straight ahead to 3000 or above, then turn RIGHT on track 100° until intercept R070°KRG, then proceed on track 070° to SULIB (R070.5° D43.3NM KRG). Cross SULIB at FL120-FL210.
<b>ARLIH 2E</b> After take-off climb straight ahead to 3000 or above, then turn RIGHT on track 140° until intercept R100°KRG, then proceed on track 100° to ARLIH (R099.6° D43.8NM KRG). Cross ARLIH at FL120-FL210.
<b>NEMKU 2E</b> After take-off climb straight ahead to 3000 or above, then turn RIGHT on track 190° until intercept R150°KRG, then proceed on track 150° to NEMKU (R150.1° D45.3NM KRG). Cross NEMKU at FL120-FL210.
<b>DOZIN 2E</b> After take-off climb straight ahead to 3000 or above, then turn LEFT on track 196° until intercept R236°KRG, then proceed on track 236° to DOZIN (R235.9° D46.8NM KRG). Cross DOZIN at FL120-FL210.
<b>SEHAL 2E</b> After take-off climb straight ahead to 3000 or above, then turn LEFT on track 233° until intercept R273°KRG, then proceed on track 273° to SEHAL (R272.5° D46.3NM KRG). Cross SEHAL at FL120-FL210.
<b>BEDKA 6E</b> After take-off climb straight ahead to 3000 or above, then turn LEFT on track 259° until intercept R299°KRG, then proceed on track 299° to BEDKA (R298.7° D53.7 KRG). Cross BEDKA at 9000FT-FL210.
<b>BANOS 6E</b> After take-off climb straight ahead to 3000 or above, then turn LEFT on track 269° until intercept R309°KRG, then proceed on track 309° to BANOS (R308.7° D41.2NM KRG). Cross BANOS at 9000FT-FL210.
<b>LESNA 6E</b> After take-off climb straight ahead to 3000 or above, then turn LEFT on track 280° until intercept R320°KRG, then proceed on track 320° to LESNA (R319.6° D37.6NM KRG). Cross LESNA at 9000FT-FL210 or above.
<b>DETOV 6E</b> After take-off climb straight ahead to 3000 or above, then turn LEFT on track 301° until intercept R341°KRG, then proceed on track 341° to DETOV (R341.3° D35.3NM KRG). Cross DETOV at FL120-FL210.